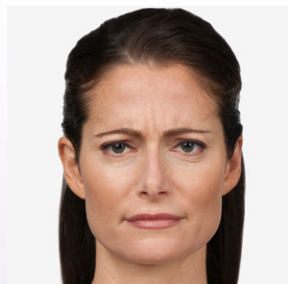


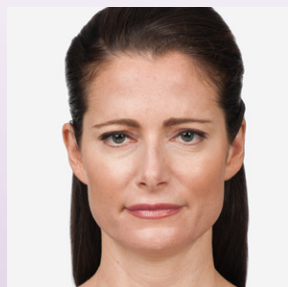
BOTOX[®] COSMETIC PATIENTS' BEFORE AND AFTER PHOTOS

Real life BOTOX[®] Cosmetic results on people just like you

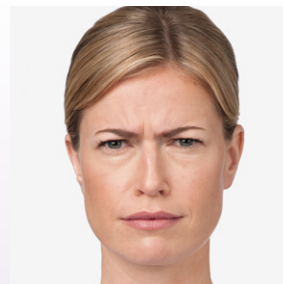
Moderate to Severe Frown Lines



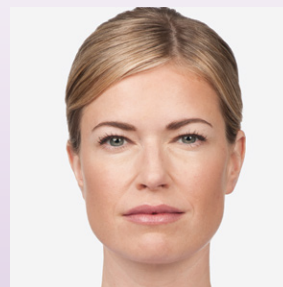
Before



After (day 7)



Before



After (day 7)

- Actual patients. Results may vary.
- Photos taken at maximum frown before and after treatment with BOTOX[®] Cosmetic (onabotulinumtoxinA) at day 7. In clinical studies, physician's assessed 80% of people had significant improvement at day 30.
- Side effects associated with the injection include localized pain, infection, inflammation, tenderness, swelling, redness, and/or bleeding/bruising.

BOTOX[®] Cosmetic (onabotulinumtoxinA) Important Information

Approved Uses

BOTOX[®] Cosmetic is a prescription medicine that is injected into muscles and used to improve the look of moderate to severe frown lines between the eyebrows (glabellar lines) in adults for a short period of time (temporary).

BOTOX[®] Cosmetic is a prescription medicine that is injected into the area around the side of the eyes to improve the look of moderate to severe crow's feet lines in adults for a short period of time (temporary).

IMPORTANT SAFETY INFORMATION

BOTOX[®] Cosmetic may cause serious side effects that can be life threatening. Call your doctor or get medical help right away if you have any of these problems any time (hours to weeks) after injection of BOTOX[®] Cosmetic:

- **Problems swallowing, speaking, or breathing**, due to weakening of associated muscles, can be severe and result in loss of life. You are at the highest risk if these problems are pre-existing before injection. Swallowing problems may last for several months
- **Spread of toxin effects**. The effect of botulinum toxin may affect areas away from the injection site and cause serious symptoms including: loss of strength and all-over muscle weakness, double vision, blurred vision and drooping eyelids, hoarseness or change or loss of voice (dysphonia), trouble saying words clearly (dysarthria), loss of bladder control, trouble breathing, trouble swallowing. **If this happens, do not drive a car, operate machinery, or do other dangerous activities**

The dose of BOTOX[®] Cosmetic is not the same as, or comparable to, any other botulinum toxin product.

BOTOX[®] COSMETIC PATIENTS' BEFORE AND AFTER PHOTOS

Real life BOTOX[®] Cosmetic results on people just like you

Moderate to Severe Crow's Feet Lines



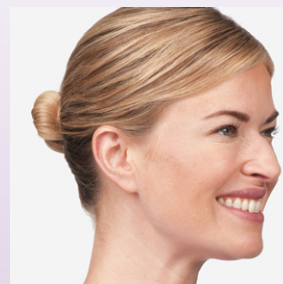
Before



After (day 7)



Before



After (day 7)

- Actual patients. Results may vary.
- Photos taken at full smile before and after treatment with BOTOX[®] Cosmetic (onabotulinumtoxinA) at day 7. In two clinical studies, 26.1% and 20.3% of people had \geq 2-grade improvement at day 30. In one of these studies, 67.9% of people had mild or no crow's feet at day 30 after treatment.
- Side effects associated with the injection include localized pain, infection, inflammation, tenderness, swelling, redness, and/or bleeding/bruising.

BOTOX[®] Cosmetic (onabotulinumtoxinA) IMPORTANT SAFETY INFORMATION (continued)

There has not been a confirmed serious case of spread of toxin effect when BOTOX[®] Cosmetic has been used at the recommended dose to treat frown lines, crow's feet lines, or both at the same time.

Serious and/or immediate allergic reactions have been reported. They include: itching, rash, red itchy welts, wheezing, asthma symptoms, or dizziness or feeling faint. Tell your doctor or get medical help right away if you are wheezing or have asthma symptoms, or if you become dizzy or faint.

Do not take BOTOX[®] Cosmetic if you: are allergic to any of the ingredients in BOTOX[®] Cosmetic (see Medication Guide for ingredients); had an allergic reaction to any other botulinum toxin product such as *Myobloc[®]* (rimabotulinumtoxinB), *Dysport[®]* (abobotulinumtoxinA), or *Xeomin[®]* (incobotulinumtoxinA); have a skin infection at the planned injection site.

Tell your doctor about all your muscle or nerve conditions, such as amyotrophic lateral sclerosis (ALS or Lou Gehrig's disease), myasthenia gravis, or Lambert-Eaton syndrome, as you may be at increased risk of serious side effects including severe dysphagia (difficulty swallowing) and respiratory compromise (difficulty breathing) from typical doses of BOTOX[®] Cosmetic.

Tell your doctor about all your medical conditions, including: plans to have surgery; had surgery on your face; weakness of forehead muscles, such as trouble raising your eyebrows; drooping eyelids; any other abnormal facial change; are pregnant or plan to become pregnant (it is not known if BOTOX[®] Cosmetic can harm your unborn baby); are breast-feeding or plan to breast-feed (it is not known if BOTOX[®] Cosmetic passes into breast milk).

Tell your doctor about all the medicines you take, including prescription and nonprescription medicines, vitamins, and herbal products. Using BOTOX[®] Cosmetic with certain other medicines may cause serious side effects. **Do not start any new medicines until you have told your doctor that you have received BOTOX[®] Cosmetic in the past.**

Please see additional IMPORTANT SAFETY INFORMATION on the next page.

BOTOX® COSMETIC PATIENTS' BEFORE AND AFTER PHOTOS

Real life BOTOX® Cosmetic results on people just like you

BOTOX® Cosmetic (onabotulinumtoxinA) IMPORTANT SAFETY INFORMATION (continued)

Especially tell your doctor if you: have received any other botulinum toxin product in the last 4 months; have received injections of botulinum toxin, such as *Myobloc*®, *Dysport*®, or *Xeomin*® in the past (be sure your doctor knows exactly which product you received); have recently received an antibiotic by injection; take muscle relaxants; take an allergy or cold medicine; take a sleep medicine; take antiplatelets (aspirin-like products) or anticoagulants (blood thinners).

Other side effects of BOTOX® Cosmetic include: dry mouth, discomfort or pain at the injection site, tiredness, headache, neck pain, and eye problems: double vision, blurred vision, decreased eyesight, drooping eyelids, swelling of your eyelids, and dry eyes.

For more information refer to the Medication Guide or talk with your doctor.

You are encouraged to report negative side effects of prescription drugs to the FDA. Visit www.fda.gov/medwatch or call 1-800-FDA-1088.

Please see BOTOX® Cosmetic full Product Information including Boxed Warning and Medication Guide.

For further information please contact Allergan, Inc.:

Lanie Shapero, Director, Public Relations, Facial Aesthetics: 732.991.4368 or 908.203.2631, Shapero_Lanie@Allergan.com

Ember Garrett, Manager, Public Relations, Facial Aesthetics: 714.246.3525 or 949.413.6091, Garrett_EMBER@Allergan.com

© 2014 Allergan, Inc. Irvine, CA 92612. ®marks owned by Allergan, Inc
APC65KO14

Dysport® is a registered trademark of Ipsen Biopharm Limited

Myobloc® is a registered trademark of Solstice Neurosciences Inc.

Xeomin® is a registered trademark of Merz Pharma GmbH & Co.