

THE IRIDICA PLATFORM: HOW IT WORKS

AN URGENT NEED FOR IDENTIFYING INFECTIONS EARLY

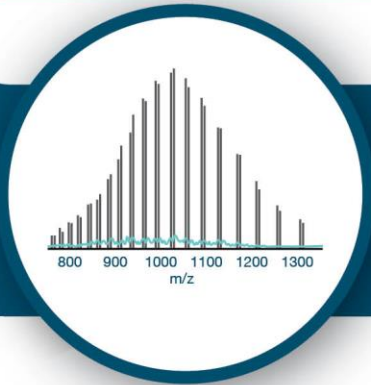
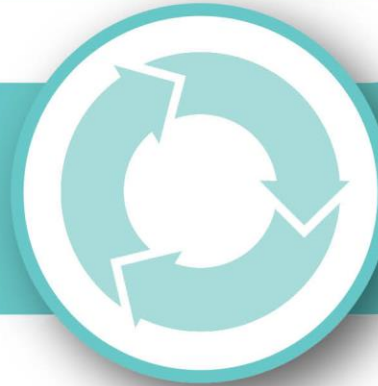
Abbott's IRIDICA platform, now available in Europe and other CE-Mark recognized countries, has the potential to change the way serious infections are diagnosed. The new platform can identify more than 1,000 infection-causing pathogens in less than six hours. By identifying the source of infections sooner, doctors can improve care for the critically ill.

SAMPLE



A lab technician collects a patient specimen. Genetic material from this specimen is extracted and used for further testing. While most of the genetic material in the specimen is of human origin, some of it belongs to the pathogen that is making the person sick.

Multiple copies of the pathogen's genetic material are generated using a process called polymerase chain reaction (PCR).



A device called a mass spectrometer is used to determine the molecular weight of the amplified genetic material.



RESULT

Sophisticated mathematical algorithms are used to identify the pathogen.

