

THE WONDERFUL AND AMAZING BEE



1/3

OF ALL CROPS RELY TO SOME EXTENT ON POLLINATION BY INSECTS



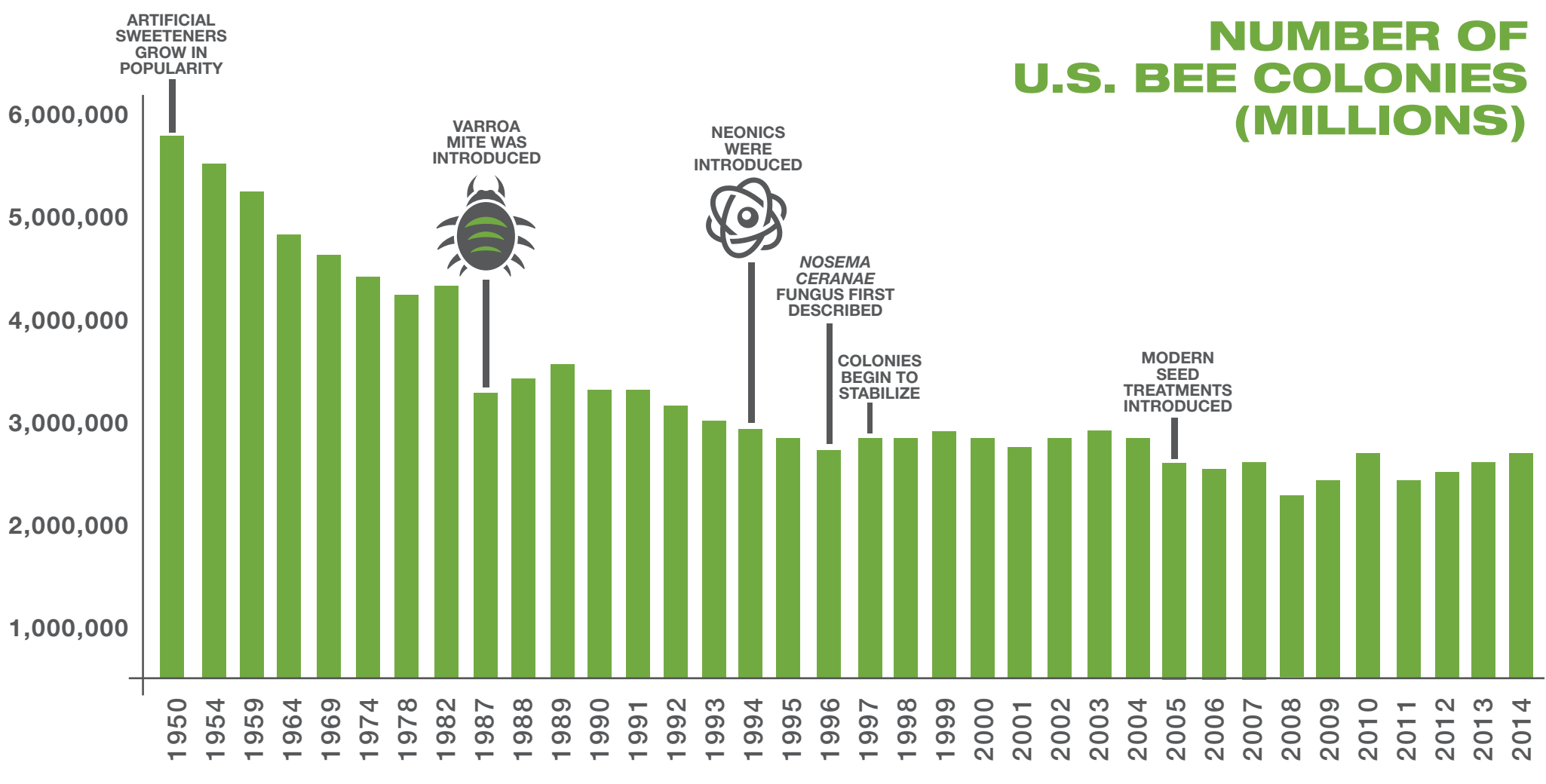
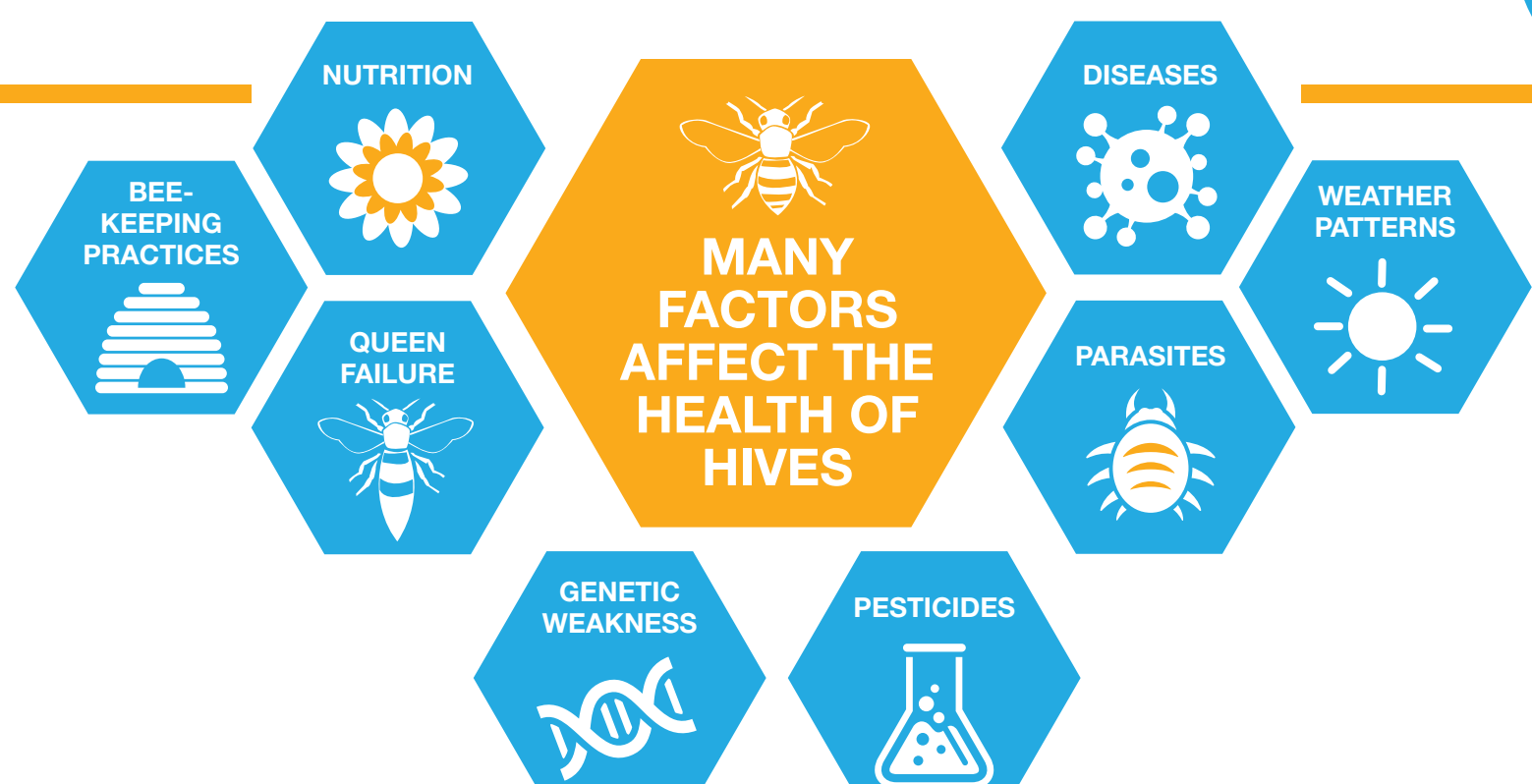
BEES VISIT UP TO

5,000

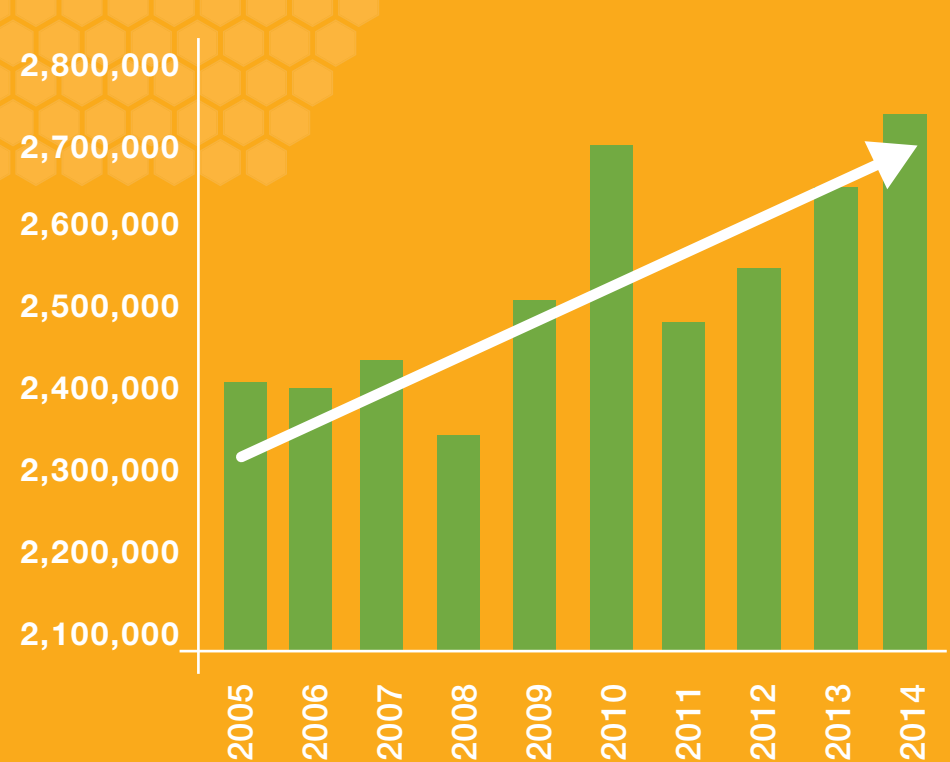
FLOWERS A DAY



BEES MUST VISIT ABOUT 2 MILLION FLOWERS TO MAKE A ONE-POUND JAR OF HONEY



HIVES ARE STABLE AND GROWING



2.74 MILLION U.S. HONEY BEE COLONIES IN 2014, UP 4% OVER 2013, REACHING THE HIGHEST LEVEL SINCE 1994

THERE'S MORE TO DO



HELP US GROW 50 MILLION FLOWERS TO FEED BEES AT FEEDABEE.COM



FOR NEARLY 30 YEARS BAYER HAS BEEN DEDICATED TO BEE CARE RESEARCH, INCLUDING PRODUCTS TO COMBAT THE VARROA MITE



A COLLABORATIVE RESEARCH INITIATIVE LED BY BAYER CROPSCIENCE AND INDEPENDENT BEE EXPERTS FOR IMPROVING THE HEALTH OF HONEY BEE COLONIES BY 2020



Bayer CropScience