

PaQ[®]

Freedom from daily insulin injections

About PaQ

- Developed specifically for people with type 2 diabetes
- Up to 3 days of continuous subcutaneous insulin delivery
- Worn on the abdomen
 - Small, ergonomic design
 - Be active, sleep, eat, exercise
 - Bathe, shower, swim (depth up to 6 ft)
- Utilizes U100 rapid-acting insulin



Basal insulin units per day

- 7 preset basal doses
- 2 bolus units delivered with each button push
- Delivers up to 330 units over 3 days



Visit CeQurCorp.com for information on clinical results, how to use, or if interested in becoming a clinical investigator.



PaQ[®]

3 day insulin delivery device



PaQ is discreet and easy to use.
3 days of basal insulin plus
push button bolus dosing providing...

freedom from daily insulin injections.

CeQur[®]

The PaQ device is not cleared for use in the United States.

PaQ[®]

3 day insulin delivery device



Infuser Unit

- Continuous basal insulin
- Push button bolus insulin
- 3 day use



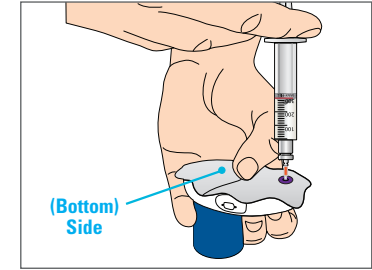
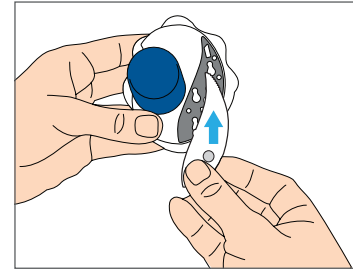
Messenger Unit

- Notification when to replace
- 1 year of use

Eliminates daily insulin injections
with no programming or infusion sets.

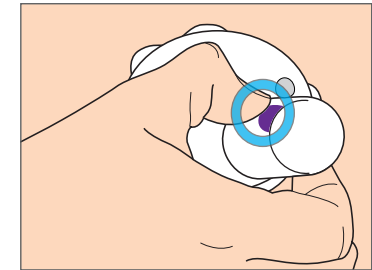
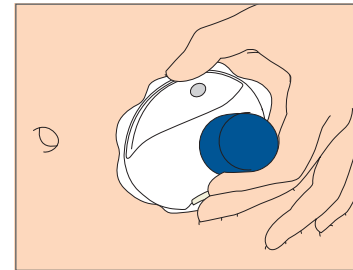
1 READY

Connect and fill with insulin



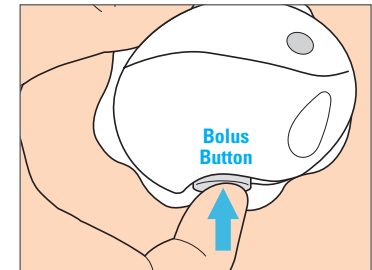
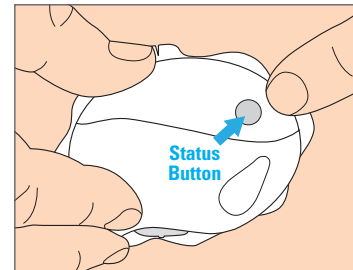
2 SET

Attach & press to set cannula



3 GO!

Check status & press to bolus



CeQur[®]

The PaQ device is not cleared for use in the United States.