



# WE KNOW BUGS

SC JOHNSON'S **ENTOMOLOGY RESEARCH CENTER** IS THE LARGEST PRIVATE URBAN ENTOMOLOGY FACILITY IN THE WORLD.

## EACH YEAR OUR SCIENTISTS STUDY THESE AND MORE

About **20 DIFFERENT SPECIES** of insects

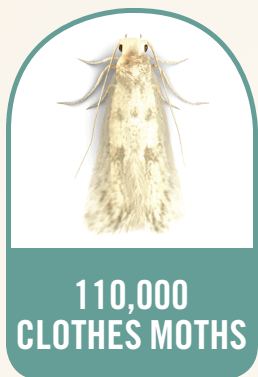
More than **15 MILLION** raised annually

**6 KEY SPECIES** of mosquitoes, including *Aedes aegypti*

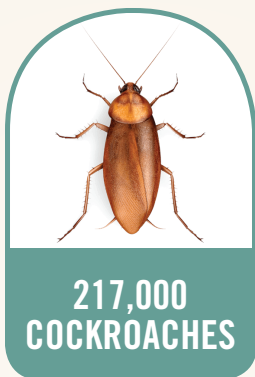
## 850,000 INSECTS ON ANY GIVEN DAY



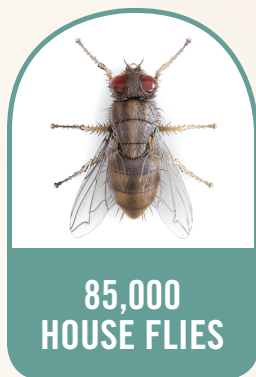
**55,000  
BEETLES**



**110,000  
CLOTHES MOTHS**



**217,000  
COCKROACHES**



**85,000  
HOUSE FLIES**



**360,000  
MOSQUITOES**

## 6 DECADES OF RESEARCH EXPERTISE

**30 ACRES**  
— THE SIZE OF  
MORE THAN  
22 FOOTBALL FIELDS.

OPERATES  
7 DAYS A WEEK,  
**365 DAYS  
A YEAR.**

19 EMPLOYEES WITH  
**250+ YEARS**  
OF COMBINED  
EXPERIENCE.

GLOBAL PRESENCE:  
IN 2013 OPENED OUR  
**2ND CENTER**, IN CHINA,  
SPANNING 3,200 SQUARE FEET.

## 60 YEARS OF PRODUCT EXCELLENCE

From our first **OFF!**® repellent in 1957 to protecting families from mosquitoes today with:

**PERSONAL REPELLENTS**  
such as sprays, lotions  
and wipes\*

**AREA REPELLENTS**  
such as coils, outdoor foggers  
and mosquito lamps\*

**INSECTICIDES**  
such as flying  
insect killers\*

\* PRODUCTS, PRODUCT FORMS AND APPROVED USES DIFFER BY COUNTRY. ALWAYS READ AND FOLLOW LABEL INSTRUCTIONS BEFORE USING ANY PRODUCT.



**LEARN MORE:** [SCJOHNSON.COM/MOSQUITOES](https://www.scjohnson.com/mosquitoes)

BROUGHT TO YOU BY SC JOHNSON, A FAMILY COMPANY.