

FLUAD™

for adults aged 65 years and older
(influenza vaccine, adjuvanted)

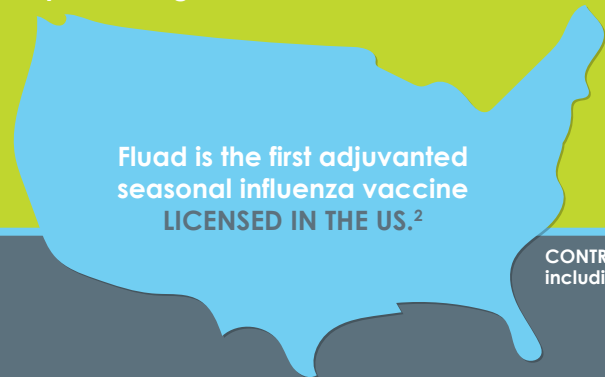
WHAT IS FLUAD?



Fluad is an inactivated influenza vaccine indicated for active immunization **AGAINST INFLUENZA DISEASE** caused by influenza virus subtypes A and type B contained in the vaccine. Fluad is approved for use in persons 65 years of age and older.¹



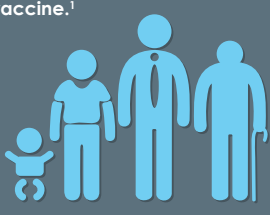
Fluad is licensed in more than **30 COUNTRIES**, and approximately 81 million doses have been distributed since first approved in 1997.³



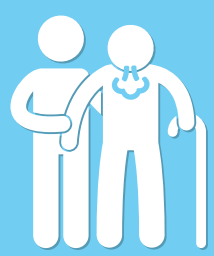
Clinical trial data from a study of **MORE THAN 7,000 ADULTS** aged 65 and older show Fluad to have a strong immune response and an acceptable safety profile.¹

CONTRAINDICATIONS: Severe allergic reaction to any component of the vaccine, including egg protein, or after a previous dose of any influenza vaccine.¹

INFLUENZA VACCINATION IS RECOMMENDED FOR EVERYONE 6 MONTHS AND OLDER, BUT IS ESPECIALLY CRITICAL FOR THE ELDERLY.⁴

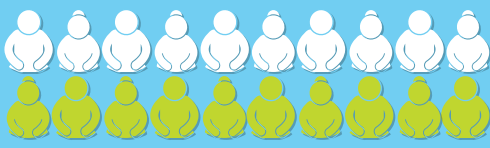


Fluad is approved for use in persons 65 years of age and older.



Due to the distinct characteristics of the immune system, the **ELDERLY CAN BE MORE SUSCEPTIBLE** to complications related to influenza.⁴

In fact, adults aged 65 years and older account for more than **50%** of influenza-related hospitalizations.⁴



And approximately **80-90%** of influenza-associated deaths.⁴



INFLUENZA CAN MAKE EXISTING CHRONIC HEALTH CONDITIONS WORSE OR LEAD TO COMPLICATIONS THAT MAY RESULT IN HOSPITALIZATION OR DEATH.⁵



86% of adults aged 65 years and older have **AT LEAST ONE** chronic health condition.⁶



And **56%** have **TWO OR MORE** chronic health conditions.⁶



VACCINATION IS THE BEST WAY TO HELP PROTECT YOURSELF AND OTHERS FROM INFLUENZA.⁴

Talk to your pharmacist or doctor about influenza prevention and to learn more about what influenza vaccine is right for you

Please see Important Safety Information on back and accompanying Full Prescribing Information.

IMPORTANT SAFETY INFORMATION

INDICATIONS AND USAGE

FLUAD is an inactivated influenza vaccine indicated for active immunization against influenza disease caused by influenza virus subtypes A and type B contained in the vaccine. FLUAD is approved for use in persons 65 years of age and older.

Approval is based on the immune response elicited by FLUAD. Data demonstrating a decrease in influenza disease after vaccination with FLUAD are not available.

CONTRAINDICATIONS

Severe allergic reaction to any component of the vaccine, including egg protein, or after a previous dose of any influenza vaccine.

WARNINGS AND PRECAUTIONS

- If Guillain-Barré Syndrome (GBS) has occurred within six weeks of previous influenza vaccination, the decision to give FLUAD should be based on careful consideration of the potential benefits and risks.
- The tip caps of the prefilled syringes contain natural rubber latex which may cause allergic reactions in latex sensitive individuals.

ADVERSE REACTIONS

- The most common ($\geq 10\%$) local (injection site) adverse reactions observed in clinical studies were injection site pain (25%) and tenderness (21%).
- The most common ($\geq 10\%$) systemic adverse reactions observed in clinical studies were myalgia (15%), headache (13%) and fatigue (13%).

Please see accompanying US Full Prescribing Information for FLUAD.



REFERENCES:

1. FLUAD [package insert] Cambridge, MA: Seqirus Inc.; 2016.
2. FDA. "FDA Approves First Seasonal Influenza Vaccine Containing an Adjuvant." Available at: <http://www.fda.gov/NewsEvents/Newsroom/PressAnnouncements/ucm474295.htm>. Accessed November 2015.
3. Fludac Development Safety Update Report.
4. CDC. "What You Should Know and Do this Flu Season If You Are 65 Years and Older." Available at: <http://www.cdc.gov/flu/about/disease/65over.htm>. Accessed November 2015.
5. CDC. "People at High Risk of Developing Flu-Related Complications." Available at: http://www.cdc.gov/flu/about/disease/high_risk.htm. Accessed November 2015.
6. CDC. "Percent of U.S. Adults 55 and Over with Chronic Conditions." Available at: http://www.cdc.gov/nchs/health_policy/adult_chronic_conditions.htm. Accessed November 2015.