

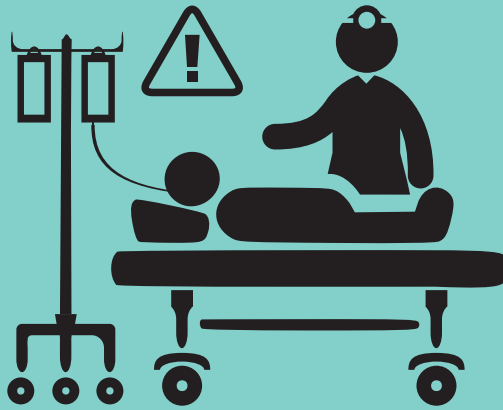
Survey of

**403**

doctors, nurses,  
service line leaders,  
& supply chain  
administrators

# Better supply chain management leads to better quality of care.

The majority of respondents say their inventory management processes are "good," but when asked...



Have you ever seen or heard of the following problems?

**24%** recalled or expired product used on a patient.

**57%** physician didn't have the product needed during the procedure.

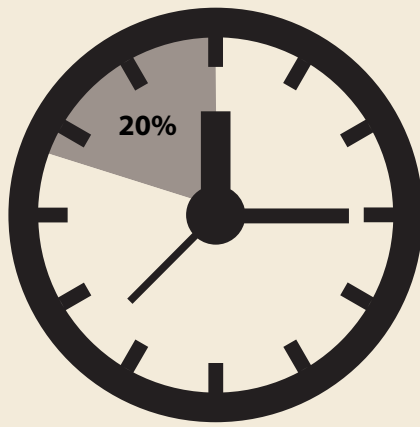
**18%** patient being harmed for not having the right supplies at the right time.

## Better supply chain management supports patient safety

Less time with supply chain means more time with patients.

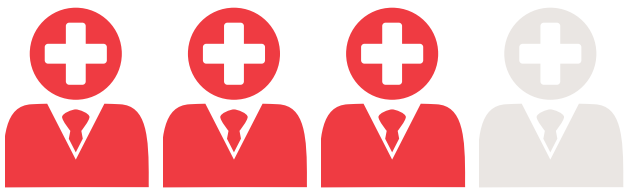
Nearly **20%** of physician & nurses' workweek is spent on supply chain management.

**65%** would trade this time to be with their patients.



**66%** surveyed wish supply, inventory & admin tasks were something they **didn't have to do** which takes the focus off patients, education, & training.

"Good" doesn't cut it in this cutting-edge health care world.



**3 out of 4**

believe the seamless operation of a supply chain is critically important to supporting quality of care and patient satisfaction and managing costs.

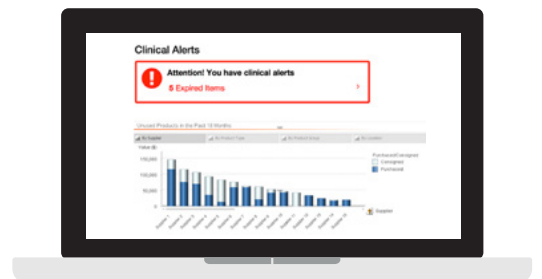
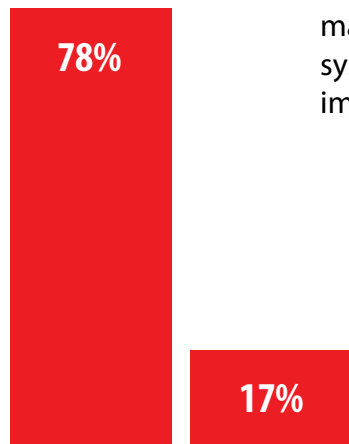


Hospitals see **\$5 billion** of waste in high-value medical devices each year.<sup>1</sup>

At least **6 years** Nearly 1/3 say its been 6 years or more since a new inventory management system has been implemented.

Another **25%** of all surveyed **don't know** if it has ever been done.

**78%** still manually count inventory in some parts of their supply chain.



Manually count

**VS**

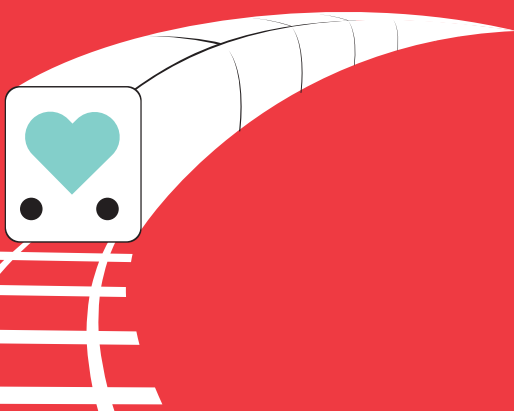
Monitor inventory in real-time with RFID tracking system

Automated supply chains offer a track to a healthier future

Supply chain leaders estimated **\$500,000** annual savings using automated supply chain technology.

How healthy is your supply chain?

Assess at [inventorymanagementiq.cardinalhealth.com](http://inventorymanagementiq.cardinalhealth.com)



<sup>1</sup>PNC Healthcare; GHX quantitative research study (August 2011)

About Cardinal Health Supply Chain Survey  
This study was fielded Oct. 19 - Nov. 4, 2016, using an online survey methodology. The samples were drawn from SERMO's Online Respondent Panel of Health Care Providers, which includes over 600,000 medical professionals in the United States. The study included 403 respondents total, including frontline HCPs in hospitals (n=201), service line leaders in hospitals (n=100), and hospital/supply chain administrators (n=102).

All survey data on file at Cardinal Health.

© 2017 Cardinal Health. All Rights Reserved. CARDINAL HEALTH, the Cardinal Health LOGO and ESSENTIAL TO CARE are trademarks or registered trademarks of Cardinal Health.