

AUVI-Q® (EPINEPHRINE INJECTION, USP) WILL BE AVAILABLE STARTING MAY 1ST FOR A NEW MEMBER OF THE FAMILY

AUVI-q 0.1 mg will be available starting May 1st for infants and toddlers weighing 16.5 to 33 pounds (7.5 to 15 kilograms)

Auvi-Q
epinephrine injection, USP
0.1 mg/0.15 mg/0.3 mg auto-injectors



Anaphylaxis is a serious, life-threatening allergic reaction affecting those of all ages. Common allergens include food, insect stings and bites, medications, and latex.^{3,4}

The prevalence of anaphylaxis in American adults has been reported as 1 in 50 and may be even higher.¹ Moreover, food allergy prevalence among children aged 0-17 years increased by 50 percent.² That's why it's important to be prepared in advance of an anaphylactic event.

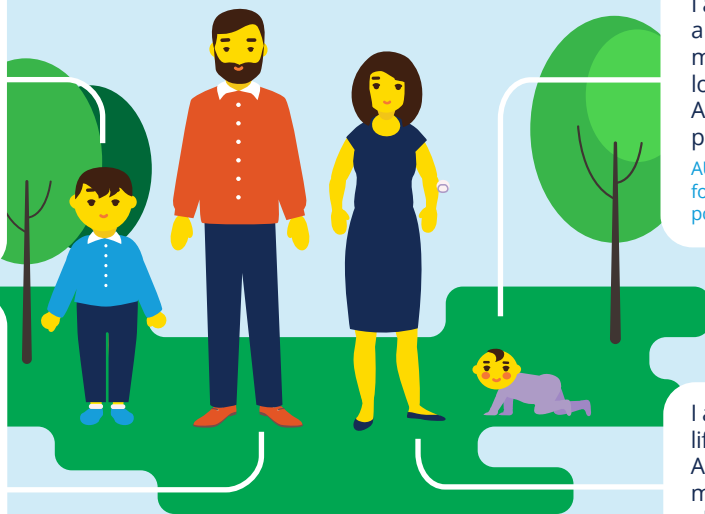
AUVI-Q® comes in three doses to treat life threatening-allergic reactions (LTA) in infants, toddlers, children, teenagers and adults.

I am Ethan. I am in third grade and am learning multiplication and division. I know how to use my AUVI-Q 0.15 mg for my severe allergy to bug bites. I brought my trainer to school and showed my teacher how to use it with the voice instructions activated by the trainer.

AUVI-Q 0.15 mg is for children weighing between 33 and 66 pounds (15 to 30 kilograms).

I am Robert, Sara's and Ethan's dad. I carry my AUVI-Q 0.3 mg for my severe allergy to shellfish, as well as Sara's and Ethan's. I am thrilled that there are now AUVI-Q epinephrine auto-injectors for all my children that are designed to be easy to use.

AUVI-Q 0.3 mg is for those with life-threatening allergies who weigh 66 pounds (30 kilograms) or more.



I am Sara. I am 9 months old and have a severe peanut allergy. My family members and other caregivers who look after me will be able to carry AUVI-q 0.1 mg, which will fit in their pockets, purses or diaper bags.

AUVI-q 0.1 mg will be available starting May 1st for infants and toddlers weighing 16.5 to 33 pounds (7.5 to 15 kilograms).

I am Maria. I do not have a life-threatening allergy. I carry the AUVI-Q auto-injectors with me in case my husband or children have an allergic emergency. I used the AUVI-Q trainer to practice how to use them.

Note, the above characters are fictional and are intended to describe a typical person's stage of life when they may carry an AUVI-Q of that dose.

Learn more about AUVI-Q – including how to obtain it – at www.auvi-q.com, or by following AUVI-Q on Facebook or Twitter.

Indication

AUVI-Q® (epinephrine injection, USP) is a prescription medicine used to treat life-threatening allergic reactions, including anaphylaxis, in people who are at risk for or have a history of serious allergic reactions.

Important Safety Information

AUVI-Q is for immediate self (or caregiver) administration and does not take the place of emergency medical care. Seek immediate medical treatment after using AUVI-Q. Each AUVI-Q contains a single dose of epinephrine. AUVI-Q should only be injected into your outer thigh, through clothing if necessary. If you inject a young child or infant with AUVI-Q, hold their leg firmly in place before and during the injection to prevent injuries. Do not inject AUVI-Q into any other part of your body, such as into veins, buttocks, fingers, toes, hands, or feet. If this occurs, seek immediate medical treatment and make sure to inform the healthcare provider of the location of the accidental injection. Only a healthcare provider should give additional doses of epinephrine if more than two doses are necessary for a single allergic emergency.

Rarely, patients who use AUVI-Q may develop infections at the injection site within a few days of an injection. Some of these infections can be serious. Call your healthcare provider right away if you have any of the following symptoms at an injection site: redness that does not go away, swelling, tenderness, or the area feels warm to the touch.

If you have certain medical conditions, or take certain medicines, your condition may get worse or you may have more or longer lasting side effects when you use AUVI-Q. Be sure to tell your healthcare provider about all the medicines you take, especially medicines for asthma. Also tell your healthcare provider about all of your medical conditions, especially if you have asthma, a history of depression, thyroid problems, Parkinson's disease, diabetes, heart problems or high blood pressure, have any other medical conditions, are pregnant or plan to become pregnant, or are breastfeeding or plan to breastfeed. Epinephrine should be used with caution if you have heart disease or are taking certain medicines that can cause heart-related (cardiac) symptoms.

Common side effects include fast, irregular or 'pounding' heartbeat, sweating, shakiness, headache, paleness, feelings of over excitement, nervousness, or anxiety, weakness, dizziness, nausea and vomiting, or breathing problems. These side effects usually go away quickly, especially if you rest. Tell your healthcare provider if you have any side effect that bothers you or that does not go away.

Please see the full Prescribing Information and the Patient Information at www.auvi-q.com.

You are encouraged to report negative side effects of prescription drugs to the FDA.

Visit www.fda.gov/medwatch or call 1-800-FDA-1088.

1. Wood, R, et al. Anaphylaxis in America: The prevalence and characteristics of anaphylaxis in the United States. *J Allergy Clin Immunol.* 2014; 133(2):461-467.

2. Jackson, K.D., Howie, L.D., Akinbami, L.J. (2013). Trends in allergic conditions among children: United States, 1997–2011. *NCHS Data Brief*, no 121. ISSN 1941–4935.

3. Lieberman P, Nicklas RA, Randolph C, et al. Anaphylaxis—a practice parameter update. *Ann Allergy Asthma Immunol.* 2015; 115(5):341-384.

4. Kelly KJ, Viswanath PK, Reijula KE, Fink JN. The diagnosis of natural rubber latex allergy. *J Allergy Clin Immunol.* 1994; 93(5):813-816.