



InstaView™ Door-in-Door®
with Craft Ice™

BEVERAGE GUIDE



VANILLA ICED COFFEE

4 oz. espresso or strong brewed coffee, chilled

1-2 tablespoons vanilla syrup

1/2 cup unsweetened coconut milk

Craft Ice™

Fill a tall (16 oz.) glass with Craft Ice.™ Pour the syrup on top, followed by the coffee. Add the coconut milk, then use a spoon or straw to stir everything together. Enjoy!





BOURBON PEACH SMASH COCKTAIL

1/2 peach, diced

3-4 mint leaves

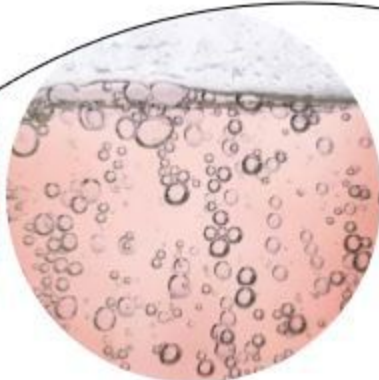
1 oz. simple syrup

1 1/2 oz. bourbon

Ginger ale or club soda

Craft Ice™

Add diced peaches, mint leaves and simple syrup to a glass and muddle together. Fill glass with Craft Ice™ and add bourbon. Top with ginger ale or club soda and gently stir. Garnish with a fresh sprig of mint and peach slice.



RASPBERRY SHERBET PARTY PUNCH

2 liter bottle Sprite or 7-Up, chilled

2 liter bottle club soda, chilled

12 oz. can fruit punch or pink lemonade, thawed

12 oz. can pineapple juice, thawed

6-8 scoops raspberry sherbet

Craft Ice™

Scoop sherbet onto baking dish lined with plastic wrap and freeze.

In a punch bowl, combine 2 juice cans, Sprite and club soda and gently stir. Add sherbet and Craft Ice™ just before serving to chill. Garnish with fresh pineapple slices and raspberries.