

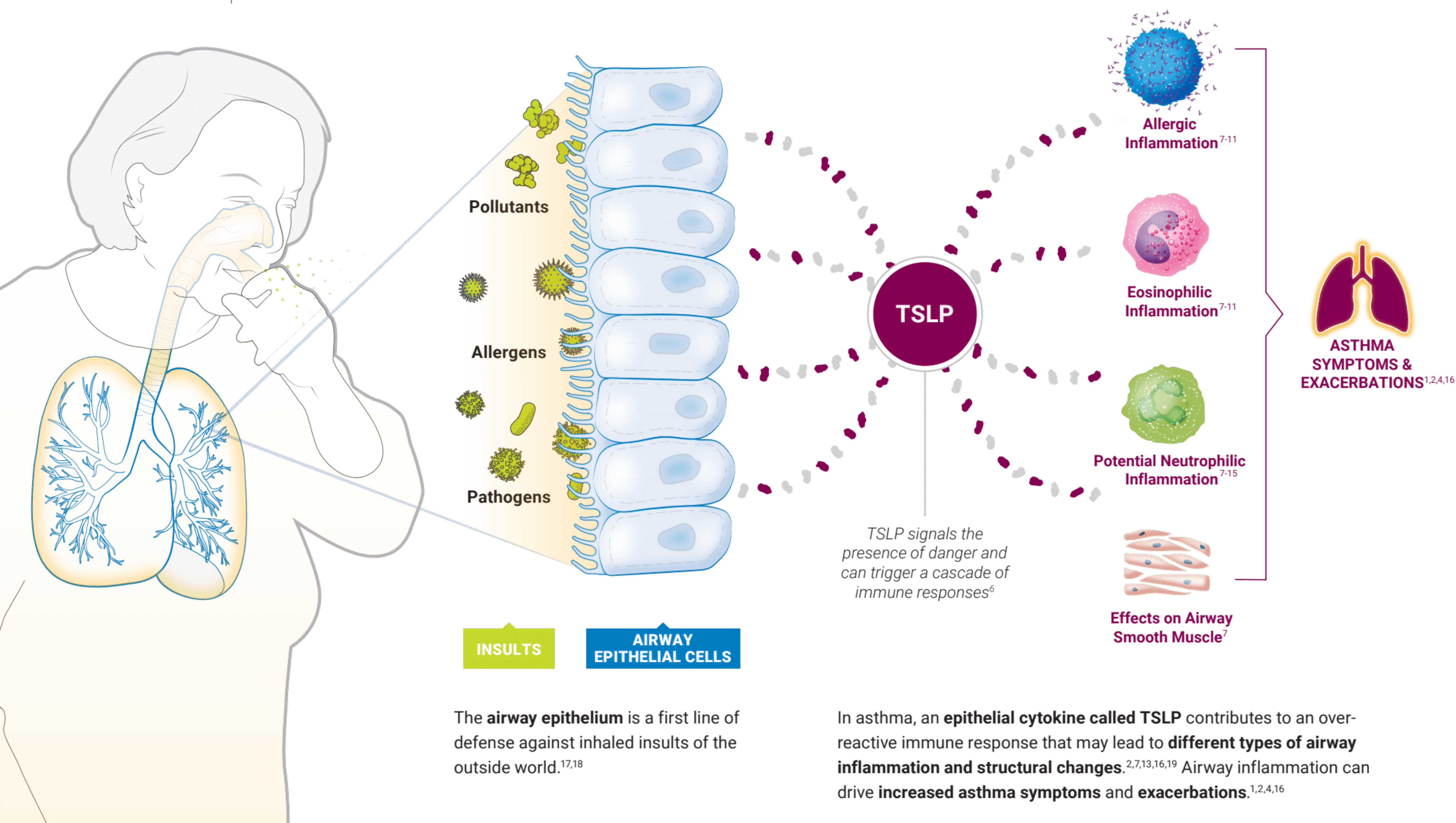
TSLP in Severe Asthma



LISTEN TO DR MICHAEL E. WECHSLER,
NATIONAL JEWISH HEALTH,
DISCUSS TSLP

Taking It From the Top

Severe asthma can be uncontrolled despite treatment because **not all severe asthma is the same**.^{1,2} Various insults or triggers can activate a range of inflammatory pathways, which can differ between patients.³ Recent research in asthma pathophysiology has implicated a cytokine called **thymic stromal lymphopoietin (TSLP)** as a key instigator of asthma inflammation.^{4,5}



REFERENCES: 1. Corren J. *J Allergy Clin Immunol Pract*. 2019;7(5):1394-1403. 2. Lambrecht BN, et al. *Nat Immunol*. 2015;16(1):45-56. 3. Menzies-Gow A, et al. *Respir Res*. 2020;21(1):268. 4. Ying S, et al. *J Immunol*. 2005;174(12):8183-8190. 5. Corren J, et al. *N Engl J Med*. 2017;377(10):936-946. 6. Ziegler SF, et al. *Nat Immunol*. 2010;11(4):289-293. 7. Gauvreau GM, et al. *Expert Opin Ther Targets*. 2020;24(8):777-792. 8. Brusselle G, et al. *Ann Am Thorac Soc*. 2014;11(Suppl 5):S322-S328. 9. Pelaia G, et al. *Nat Rev Drug Discov*. 2012;11(12):958-972. 10. Pasha MA, et al. *Allergy Asthma Proc*. 2019;40(3):138-145. 11. Brusselle GG, et al. *Nat Med*. 2013;19(8):977-979. 12. Li Y, et al. *J Immunol*. 2018;200(7):2253-2262. 13. Liang Y, et al. *J Allergy Clin Immunol*. 2019;144(4):1025-1035.e7. 14. Tanaka J, et al. *Clin Exp Allergy*. 2009;39(1):89-100. 15. Chesné J, et al. *Am J Respir Crit Care Med*. 2014;190(10):1094-1101. 16. Lambrecht BN, et al. *Immunity*. 2019;50(4):975-991. 17. Erle DJ, et al. *J Cell Biol*. 2014;205(5):621-631. 18. Corren J, et al. *Nat Immunol*. 2019;20(12):1603-1609. 19. Shikotra A, et al. *J Allergy Clin Immunol*. 2012;129(1):104-111.e1-9.