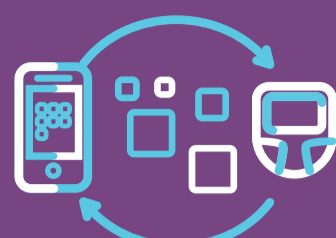




LEADER AND TRUSTED PARTNER
in diabetes care with passion for helping people living with diabetes



EXCELLENCE
with high quality products and solutions that are highly accurate, precise and reliable



FORWARD-THINKING
in our research, innovation and development of new products for people with diabetes

OUR PRODUCTS IN THE UNITED KINGDOM

Our portfolio of products combines state-of-the-art technology with user-friendly functionality that helps people with diabetes manage their condition and to help improve their quality of life.



CONTOUR®NEXT
Advanced features for remarkable accuracy beyond ISO 15197:2015 performance standards



CONTOUR® AND CONTOUR®TS
Affordable solutions for uncomplicated Type 2 patients with basic testing needs



DIABETES MANAGEMENT SOLUTIONS
Simple solutions for tracking results and trends in blood glucose readings to help manage diabetes.

Our products are sold in more than 125 countries. A full list of products and services is available on the Ascensia Diabetes Care website [here](#).

OUR PARTNERS

DEDICATED TO PROVIDING SUPPORT ON OUR JOURNEY

Panasonic Healthcare Holdings Co., Ltd.

Backed by funds from

Panasonic



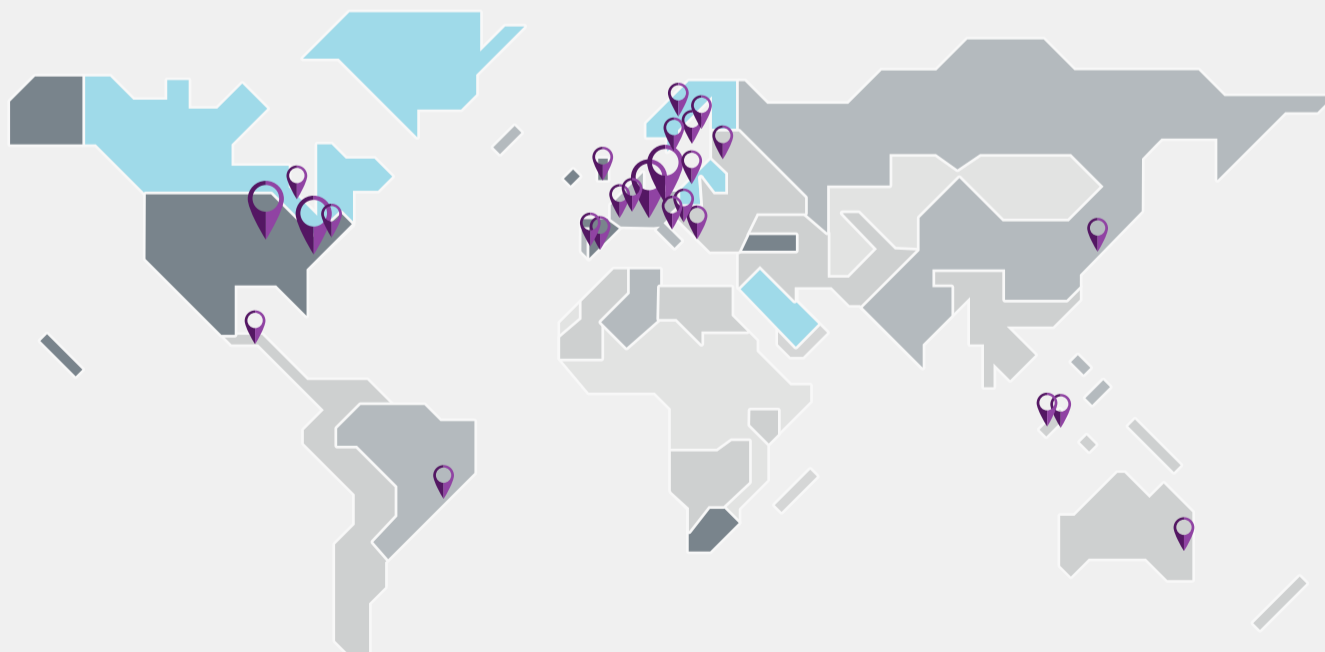
KKR



Continuing the heritage of more than **70+ YEARS** of innovative diabetes products.



Global Diabetes Care Company with more than 1,400 employees operating in **38 COUNTRIES** (following transaction close in all countries)



Global Headquarters in **BASEL, SWITZERLAND**



Our products help **10 MILLION PEOPLE WORLDWIDE EVERY DAY***



STRONG PIPELINE of Research and Development programmes investigating products and solutions for diabetes management

* Data on file, Ascensia Diabetes Care